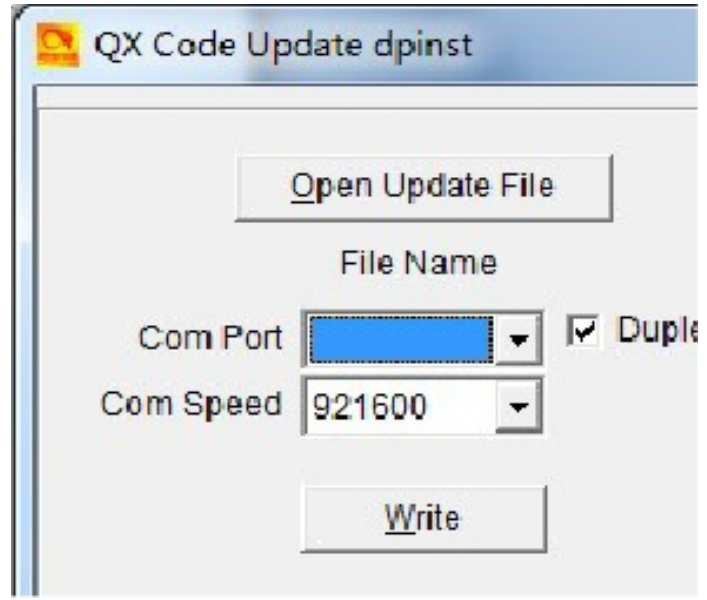


Import Communications - Icon Updating



Icon Updating (this step is not always required)

Icon Updating is only necessary if Anytone provides such an update. This would normally come as an additional file supplied with a firmware update. **Do not use the same .spi file that was used to update your firmware as the Icon Update.**

The procedure is as follows:

1. Attach your radio to your computer with the USB programming cable
2. Press and hold, **both** the PTT button and the PF2 button, while powering on the radio. The radio's screen will display UPDATE MODE
3. Start the firmware updating program QXCodePro_Update
4. Click the button Open Update File in the software and find the latest **Icon** update file. Example: **D868_1G_ICON_V1.1.spi**
5. Choose the correct Com Port from the drop-down list in the software
6. Tick the Duplex box and set the Com Speed to 921600
7. Click the Write button to update the firmware
8. After the update is finished, reboot your radio by powering it off and back on again