

Important Notice: After update the firmware, you need to do the reset to the radio firstly, power off the radio firstly. Then power it on while holding the PTT and the PF1 button below the PTT at the same time. The radio will start up with a note on the display stating MCU Reset, Please Wait – and do not turn the radio off while it restarts.

After a re-start the radio will display the setting of the date and the time. Use the up-down key to set the current year. Move to the month by pushing the P1 key. Set the month, and use the P1 key to move forward each step. Once done, click the Menu key to save the date and time.

Also please set up the time zone to avoid the date/time error.

Please make sure the codeplug is saved to PC before your do the update and reset.

D868UV firmware update V1.30 and V2.30

Hardware V1.0 --- Please use the firmware V1.30 for updating the radio.

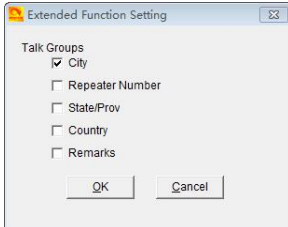
Hardware V1.1 --- Please use the firmware V2.30 for updating the radio.

V1.30 and V2.30 Improvements (dated 2018-6-25)

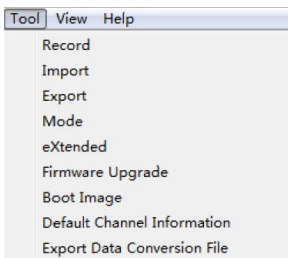
- 1.Resolved the issue that when auto repeater is on, it will be off after the radio is power off and re-power on .
- 2.Resolved the issue that when set up the PF2 long press to scan, it can not start the scan normally.
- 3.Resolved the issue that when in repeater mode, sometimes no RSSI and green light when release the PTT key.
- 4.Add the slot switch function in key function
- 5.Add the auto repeater range, the auto repeater will be auto on within the range, auto off out of the range.
- 6.Separate the auto repeater set up for A channel and B channel.
- 7.In radio ->Main Menu -> Call Log -> [4] Last Call, add 30 last call list
- 8.Rename the SCT Ver FW in device information to be SCT 3258 Ver
- 9.In CPS->Digital->Friends List, change the Repeater number to be Call Sign, also change the search to be non case sensitivity.
10. In CPS->optional setting->Other->Address Book Sent With Its Own Code, allow to on or off. It meets the requirement: **When I do select "12345" from the address book, the TX-Radio transmits "12345*262". As echo-link does not use radio-IDs, appending "*262" will cause an error. The question is, how to switch off the "*262" in this example.**
- 11.change black font in menu bar on home screen to white.

Note:

1. Since we have increased a Squelch off option for Analog mode afterwards FW2.23, when you open an old codeplug, please reset the analog squelch firstly.
2. Some reports the exported Talk Groups are missing some information, please remember to check on the boxes when you need more information, in CPS- Tool – Extended function.



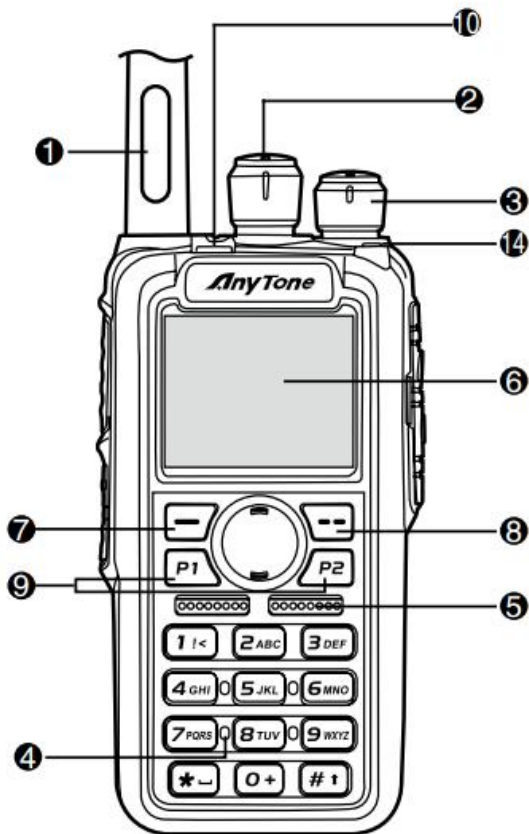
3. Tool – Export Data Conversion File, it will allow you save a codeplug in .dcf file. The exported .dcf file can be opened by latest 2.50 Contact Manager. Also you can directly load the .dcf file to CPS2.25 with changing the file open type to .dcf file.

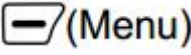



Below are the user friendly operations in D868UV

1. Allow mix the digital mode and monitor mode in RX.
2. Single slot/double slot digital monitor set up
3. Allow set up the audio pitch to get more suitable audio during DMR communication.
4. Allow response to the last caller with a programmed key.
5. Allow send the recording to the other user or group.
6. Allow get the remotely GPS positioning information, it is useful especially in outdoor team touring.
7. Headset volume set up to avoid the loud volume heart the ear.

How to know your firmware version



Press 7  (Menu) key to enter the menu, press  key to the Device Info and enter into the menu to check the hardware version.

Hardware V1.0 --- Please use the firmware V1.xx for updating the radio.

Hardware V1.1 --- Please use the firmware V2.xx for updating the radio.

If you use wrong firmware for updating, the radio will not work, but it is not broken. After load into correct firmware, it will work fine.

Actually the V1 and V2 firmware are almost same, just in/out is different, so every time when Engineer make updates, he will issue 2 firmwares at the same time.

The V1.1 hardware has below difference compare with V1.0 hardware.

- 1) no jumper wire
- 2) CPU IC in/out pin is different.