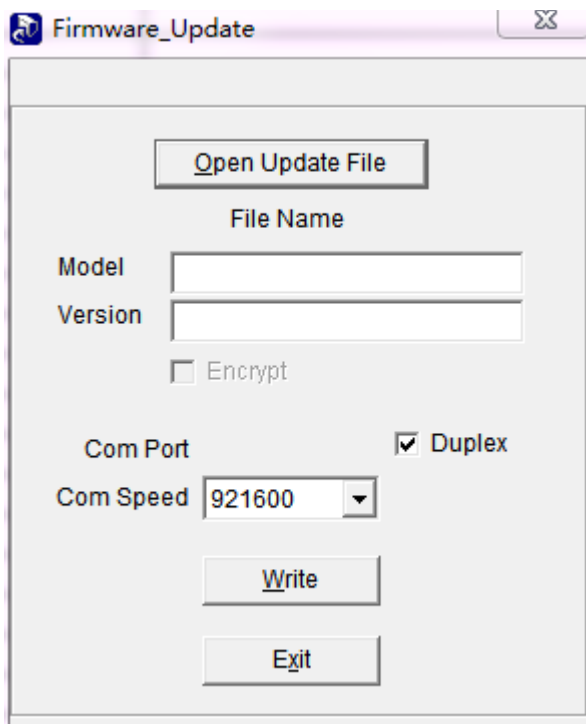


Icon Updating

1. Hold pressing PTT key and PF2 key (the bottom side key), at the same time power on radio, LCD display UPDATE MODE
2. Use PC cable connect PC to radio
3. In CPS-> Set ->Set Com, choose the correct Com Port.
4. In CPS ->Tool, choose the firmware upgrade. Or use the QX_Firmware_Update.exe for firmware upgrade



5. Click: Open, Update File, and choose D878_1G_ICON_V1.1b_20180818.spi
6. Set Com Speed to 921600 and tick on Duplex
7. Click Write to update the radio the latest firmware.
8. Reboot the radio when the update is finished.